



Newsletter Friday 5th December 2025

Ambition Belonging Courage

Key dates for your diary:

December

Mon 8th	Y5 and 6 Quicksticks hockey 3.30 - 5.00pm
Tues 9th	EYFS Nativity 9.30am
Wed 10th	Y1 Christmas show 9.15am
Thurs 11th	Y2 Christmas show 9.15am
Fri 12th	Rock Steady Band Concerts - AM+PM
Tues 16th	Y3,4,5 - Groovin' The Nativity - 2pm + 5pm
Wed 17th	PANTO DAY
Thurs 18th	Christmas lunch & jumper day Y6 Village light trail
Fri 19th	Church visit

House Point Results Winning House Goodwood

Cowdray 833 Parham 630

Goodwood 869 Petworth 783

Dear Families,

It has been a festive and joyful week in school. Our choir and country dancers visited Derwent Lodge Care Home, sharing music and dance with the residents and bringing Christmas cheer to the community.

Across school, Christmas performances are taking shape, and the sound of rehearsals is creating a wonderful atmosphere. Year 3's ukulele concerts were another highlight, with fantastic feedback on Facebook—thank you to **Mrs Eames** for leading these so brilliantly.

We also enjoyed welcoming families to our EYFS Christmas Craft sessions for children joining us in September 2026. It was lovely to see our future starters getting creative and beginning to feel part of our school.

A big thank-you to **Furze Firs** and **Moles Country Stores** for donating our Christmas trees - they have helped make the school look wonderfully festive.

Finally, thank you for your continued support during this busy period and for responding promptly to permission forms and emails. It is greatly appreciated.

Wishing you a restful weekend,
Ms Ley

ATTENDANCE

Attendance has dropped slightly this week.
Let's make a huge effort to ensure children are in and ready to learn for the next two weeks

94.7%	This year
94.8%	National Average



Miss Barnes has just started her teaching career here at BPA. She is loving every second in year 5, especially being able to share her love for reading and discovering new books with Hargrave class.



Fun Fact:
Miss Barnes can count to ten in Japanese.

Hobbies:
Reading, crochet and playing padel!



Year 3 - Ukulele Concerts

On Tuesday, Year 3 proudly performed for parents and carers, sharing a wonderful range of songs - singing and playing beautifully to showcase just how far they've come since September. Their confidence, teamwork and musical skills were truly amazing to see! A huge thank you to Mrs Eames from [West Sussex Music](#) and to the [BPA Bees](#) for funding the Ukulele Programme this year - this opportunity makes such a difference! We'd love your feedback! Thank you for all the wonderful comments share on Facebook!





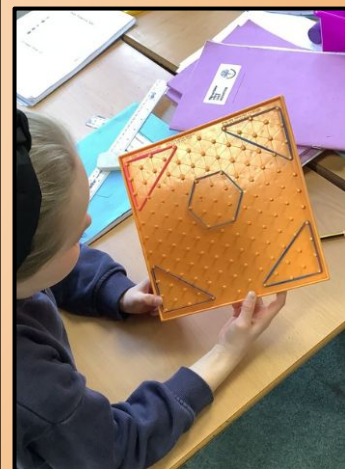
Country Dancers in the Community

On Tuesday afternoon, some of our Country Dancing club members visited Derwent Lodge to dance for the residents. They've only been dancing together since September, but they confidently performed six dances to Christmas songs from memory and had so much fun doing it! A huge thank you to our wonderful parent helpers - it truly wouldn't have been possible without you. Finally, thank you to Derwent Lodge for the warm welcome and the lovely post-dance refreshments!



Year 4 - Maths






Year 4 has been diving into the fascinating world of polygons!   The children explored different types of polygons - from triangles to octagons - and identified what makes each shape unique. They used elastic bands and geoboards to create their own shapes, experimenting with small changes that led to entirely new polygons. A hands-on, creative, and super engaging way to explore geometry!

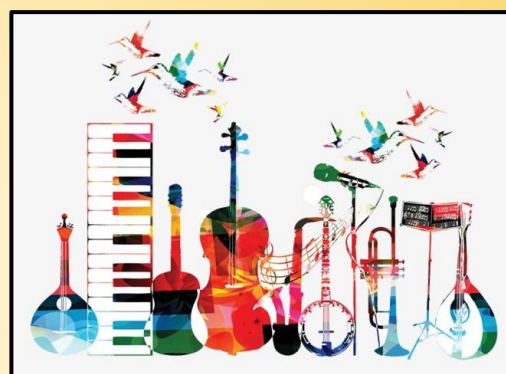


Instrumental Lessons at School

We are pleased to offer weekly instrumental lessons in school, delivered by specialist teachers from **West Sussex Music**. Learning an instrument is a fantastic way for children to build confidence, creativity, and a love of music.

Instruments on offer include:

-  Violin, viola, cello, double bass
-  Trumpet, cornet, trombone, French horn, tuba
-  Flute, clarinet, saxophone, oboe, bassoon
-  Acoustic, electric, and bass guitar
-  Keyboard & piano



If you are interested in signing your child up for lessons, please visit the West Sussex Music website:

➔ <https://www.westsussexmusic.co.uk/music-lessons/>

Parents should contact **West Sussex Music** directly to arrange lessons.



A **bursary scheme** is also available to support eligible families. Find out more here:

➔ <https://www.westsussexmusic.co.uk/bursary/>



RECYCLE YOUR CHRISTMAS TREE

And help Chestnut Tree House Children's Hospice Care and other local charities

If you live in postcodes RH20 and RH14 9, for a DONATION, we will collect & recycle your tree from 11th to 14th January 2026

Just SCAN here



Or visit www.just-helping.org.uk/register-tree

Registration opens 15th November 2025
Closes 7th January 2026

Once again we have the support of Just-Helping who support volunteers, businesses and charities to contribute to their community and the environment. The national Christmas tree collection raises essential funds for charities in the local community.

JUSTHELPING
Supporting the local community

Thank you for your support

This year, after costs, 50% of the monies raised will go to Chestnut Tree House with the rest going to support worthy local charities and not-for-profit organisations within our tree collection area.



Chestnut Tree House is the children's hospice for Sussex and South East Hampshire providing care services and community support for children and young people with life-limiting/threatening conditions. www.chestnut-tree-house.org.uk
Registered charity number 256709

For many years Storrington & Pulborough District Rotary Club has been raising funds by collecting your Christmas trees and the money collected has helped us to support many worthy local causes. www.storringtonrotary.org.uk
Registered charity number 529115



We are working with Billingshurst & District Lions Club to collect your trees and are grateful also for the support of these local businesses...



Recycle your tree!

Please support your local Rotary by recycling your Christmas tree. This year, 50% of monies raised will go to Chestnut Tree House to support children and young people.

See the posters for more information.



BPA Bees

Christmas Trug Fundraiser - Thank you for all the class trug donations and raffle ticket purchases so far. Please make sure you have brought in your donations and raffle tickets by **Thursday 11th December**. Next week, we will be on the school gate at drop off and at the Early Years & KS1 performances. Please come and see us to hand in your raffle tickets or buy more!

Don't forget we are also collecting festive food & drink (no alcohol) donations for the local food bank. These can be left in our trug outside the school office.

New Year Quiz - Join us for our New Year Quiz on **Friday 16th January**. Teams of up to 6 people are £30. You can book your table here: [New Year Fundraising Quiz Night Tickets](#). Fri 16 Jan 2026 at 18:45 | Eventbrite.

Facebook - <https://www.facebook.com/bpabees>

Instagram - https://www.instagram.com/bpa_bees

Or you can contact us via email:

bpabees@billingshurstprimary.org.uk



FOLLOW US!



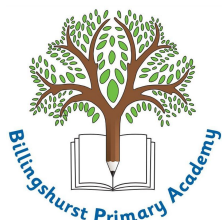
Facebook Instagram



Follow us



Follow us



www.facebook.com/BillingshurstPrimary

Instagram - @billingshurstprimaryacademy

Website - www.billingshurstprimary.org.uk

