

Welcome to  
Year 1

# These are the adults that will be working in Year 1.

Mrs Langley  
Year Lead Percival Class



Mrs Hunt  
Year Lead Percival Class



Mrs Goldsmith  
Jeffers class



Mrs Hampson  
Jeffers class



Miss Milner  
Klassen class



Mr Keohane  
LSA



Miss Emmerson  
LSA



Miss Cross  
LSA



Mrs Van Jaarsveld  
LSA



Mrs Molla  
LSA



Mr Tickner  
LSA





# This is Percival classroom



This is where you will enter the school and your classroom.



This is where you will hang your coat and book bag.

# This is Jeffers classroom



This is where you will enter the school and your classroom.



This is where you will hang your coat and book bag.



# This is Klassen classroom



This is where you will enter the school  
and your classroom.



This is where you will hang your coat  
and book bag.



This is the area outside of Year 1 where you may sometimes work.



These are the class toilets.



These are the KS1 & KS2 Halls where you will have lunch and assemblies.



This is the Year 1 outside area.



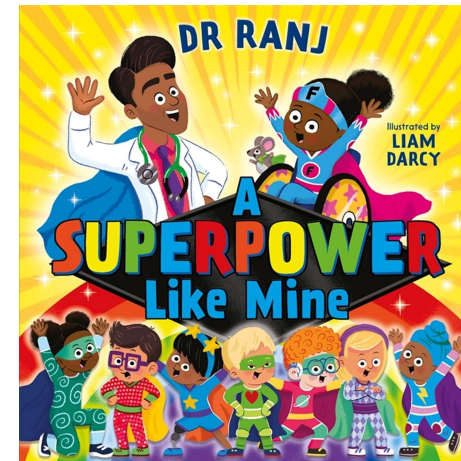
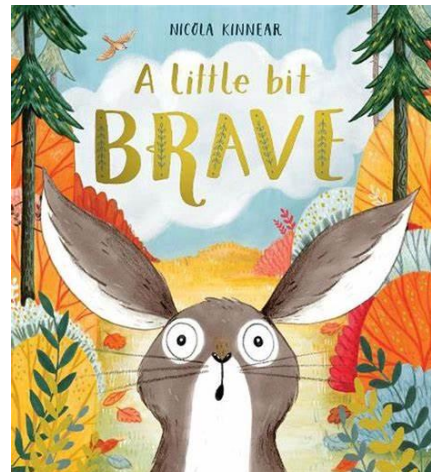
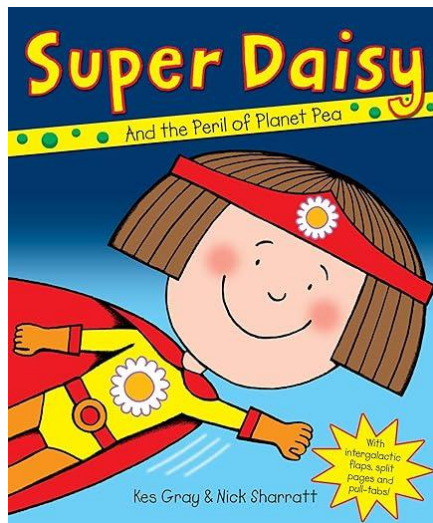
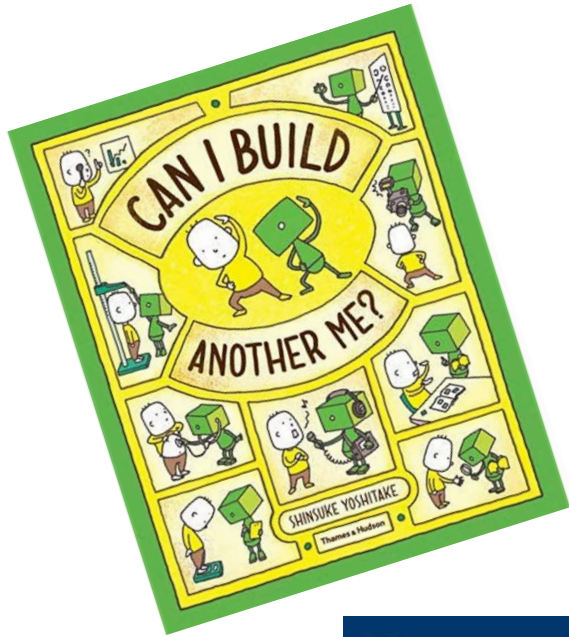
# This is your playground/field





When you return to school your topic theme will be 'Why am I super?'

You might like to start exploring some of these books during the summer holidays.





We are really looking forward to  
seeing you in September.

